

OUR ETHOS IS BUILT ON THE 10 PRINCIPLES

A SET OF COMMONLY UNDERSTOOD VALUES REFLECTED
IN THE BURNING MAN EXPERIENCE

RADICAL INCLUSION: Anyone may be a part of Burning Man. We welcome and respect the stranger. No prerequisites exist for participation in our community.

GIFTING: Burning Man is devoted to acts of gift-giving. The value of a gift is unconditional. Gifting does not contemplate a return or an exchange for something of equal value.

DECOMMODIFICATION: In order to preserve the spirit of gifting, our community seeks to create social environments that are unmediated by commercial sponsorships, transactions, or advertising. We stand ready to protect our culture from such exploitation. We resist the substitution of consumption for participatory experience.

RADICAL SELF-RELIANCE: Burning Man encourages the individual to discover, exercise, and rely on his or her inner resources.

RADICAL SELF-EXPRESSION: Radical self-expression arises from the unique gifts of the individual. No one other than the individual or a collaborating group can determine its content. It is offered as a gift to others. In this spirit, the giver should respect the rights and liberties of the recipient.

COMMUNAL EFFORT: Our community values creative cooperation and collaboration. We strive to produce, promote, and protect social networks, public spaces, works of art, and methods of communication that support such interaction.

CIVIC RESPONSIBILITY: We value civil society. Community members who organize events should assume responsibility for public welfare and endeavor to communicate civic responsibilities to participants. They must also assume responsibility for conducting events in accordance with local, state, and federal laws.

LEAVING NO TRACE: Our community respects the environment. We are committed to leaving no physical trace of our activities wherever we gather. We clean up after ourselves and endeavor, whenever possible, to leave such places in a better state than when we found them.

PARTICIPATION: Our community is committed to a radically participatory ethic. We believe that transformative change, whether in the individual or in society, can occur only through the medium of deeply personal participation. We achieve being through doing. Everyone is invited to work. Everyone is invited to play. We make the world real through actions that open the heart.

IMMEDIACY: Immediate experience is, in many ways, the most important touchstone of value in our culture. We seek to overcome barriers that stand between us and a recognition of our inner selves, the reality of those around us, participation in society, and contact with a natural world exceeding human powers. No idea can substitute for this experience.

BURNING MAN 2018 SURVIVAL GUIDE

BLACK ROCK CITY IS A TEMPORARY METROPOLIS BUILT IN NEVADA'S BEAUTIFUL, REMOTE AND INHOSPITABLE BLACK ROCK DESERT. YOU ARE RESPONSIBLE FOR YOUR OWN SURVIVAL, SAFETY, WELL-BEING, AND LEAVING NO TRACE. THIS SURVIVAL GUIDE IS ESSENTIAL READING FOR EVERY PARTICIPANT—FIRST-TIMERS AND VETERANS ALIKE. READ IT CAREFULLY AND SHARE IT WITH EVERYONE IN YOUR GROUP FOR MORE DETAIL CHECK OUT THE PREPARATION SECTION OF THE BURNING MAN WEBSITE.



AUGUST 26 • SEPTEMBER 3

THE BURNING ESSENTIALS

IF YOU TAKE ANYTHING AWAY FROM READING THIS SURVIVAL GUIDE, IT SHOULD BE THESE THINGS:

1. PARTICIPATE: Unlike other events, Burning Man is created by the people who attend—that means YOU! Participants are responsible for creating Black Rock City (BRC).

2. LEAVE NO TRACE: There are no trash cans in BRC. You must take out everything you bring in. Nothing goes in the portable toilets except human waste and 1-ply toilet tissue. If it wasn't in your body, don't put it in the potty!

3. COMMERCE: BRC is based on a gift economy—it is a place of sharing and free exchange. You cannot buy anything in Black Rock City (except coffee in the Center Camp Café and ice at Arctica locations). See pages 4, 5, & 12.

4. CARS: BRC is designed for pedestrians and bicycles. Except for public agencies, specially-marked BRC department service vehicles and those licensed by the Department of Mutant Vehicles, NO cars, motorcycles, motor-scooters, ATVs, golf carts or go-carts are allowed to drive in our city or on the open playa around it. See page 7.

5. PERSONAL SAFETY: The Black Rock Desert is a harsh and challenging environment; you are responsible for your own survival. Nights on the playa are dark—illuminate yourself, your bike and your artwork. See page 11.

6. FIRE GUIDELINES: All participants using fire effects or burning their artwork must follow our Fire Art Safety Guidelines. All structures must be 20 feet from anything burning (including burn barrels). Aerial flares, rockets, explosives and fireworks are prohibited. Keep at least one ABC fire extinguisher in a central, visible location in each camp and one in each camper or trailer. No fires of any kind are allowed on the unprotected playa surface. See page 9 for information about burning on playa.

7. SOUND: Be a considerate neighbor! Large scale sound zones are located along the 2:00 & 10:00 streets. Within the city the maximum power amplification is 300 watts, producing no more than 90 decibels at 20 feet. Mutant Vehicles with sound systems must follow the Sound Policy. If you get more than two warnings about your sound system, you may lose your MV license and the right to drive it for the rest of the event. See page 15.

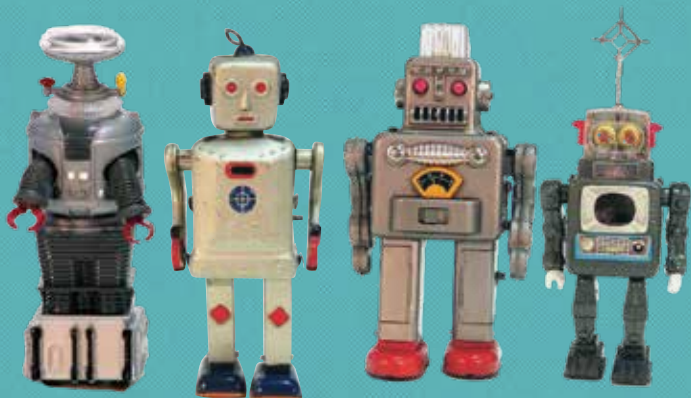
8. LAWS: Burning Man takes place on federal land, and is subject to local, state and federal laws, including those involving illicit narcotics. The U.S. Bureau of Land Management (BLM) and Pershing County Sheriff's Office patrol BRC, and you risk being cited, arrested and/or evicted if you break the law. Burning Man does not promote or condone illegal activity of any kind. See page 16.

9. PUBLIC BOUNDARIES: Camping is only allowed within BRC's established streets and the Walk-In Camping area. You may not camp on the open playa (this area is reserved for art) or in the BLM-established buffer zone on the playa around Black Rock City. See page 17.

10. FIREARMS & LASERS: The possession of firearms (including BB guns, air rifles and paintball guns) is prohibited in Black Rock City. Hand-held lasers are also prohibited.

11. TICKETS & VEHICLE PASSES: All vehicles driven into Black Rock City must display a valid vehicle pass. Participants MUST purchase vehicle passes and tickets prior to arrival. All tickets, including Low Income tickets and any other tickets that are paid for on-site, are subject to the 9% Nevada Live Entertainment Tax. If you need to make a payment, please be prepared to do so with a credit card. Will Call closes on Saturday, September 1, at noon.

12. EVENT ENTRY: Our Gate opens at 12:01 am Sunday, August 26. No one under 18 will be admitted without a parent or guardian. You are legally bound to the terms on the back of your ticket—read them! Anyone caught harboring stowaways faces citation, ejection from the event, and/or having their tickets voided.



BLACK ROCK CITY

YOU DID IT! YOU'RE GOING TO BURNING MAN! AS YOU HOPEFULLY KNOW FIRST-HAND, PARTICIPANT ENGAGEMENT AND INVESTMENT IN OUR COMMUNITY ARE CRUCIAL FOR OUR HOME IN BLACK ROCK CITY AND FOR BURNING MAN CULTURE TO CONTINUE TO FLOURISH WORLD-WIDE.

ARRIVING AT BURNING MAN

MAKE SURE YOUR VEHICLE (AND WHATEVER YOU ARE TOWING) HAS A CURRENT REGISTRATION STICKER, AN UNOBSTRUCTED REAR LICENSE PLATE, A LICENSE PLATE LIGHT, AND TWO WORKING HEADLIGHTS, TAIL LIGHTS, AND BRAKE LIGHTS. BE SURE YOU HAVE A VALID DRIVER'S LICENSE AND CURRENT INSURANCE.

FOR MAP AND DIRECTIONS TO BLACK ROCK CITY, SEE THE BACK COVER.

WHEN YOU ARRIVE

At the Gate, everyone in your vehicle must have a ticket in hand or your entire car will be turned around.

The speed limit on Gate Road is 10 MPH. Speeding causes traffic stops, deep ruts in the playa, and dust, which is a safety hazard. Tune in to Gate Advisory Radio Station 95.1 FM for Gate updates (BMIR at 94.5 FM for event info).

Picking up a Will Call ticket? You can access the Box Office from all lanes of traffic. Gate staff will direct you to where to park. If one person in your vehicle has a Will Call ticket, the entire vehicle must go to the Box Office. Proceed to the Box Office, get your tickets/vehicle pass, return to your vehicle, and proceed to the Main Gate. Please **do not get out of your vehicle** until you are parked in the Will Call lot.

Note: For the safety of all participants, do not drive faster than 5 MPH while inside the Will Call and the Main Gate areas.

Be prepared to have your vehicle searched for prohibited items (see below) and stowaways. Keep this in mind when packing. After Gate, the Greeters will welcome you and give you your printed city map and other event information.

This year the gate will open at 12:01 am on Sunday, August 26, and close at 12 pm on Tuesday, September 4. This does not extend the beginning and ending of the event itself.

The official event start time is 6 pm Sunday, August 26, and the event officially ends at 6 pm Monday, September 3. Before and after these start and end times, participants are to focus only on camp setup and breakdown. Complete arrival information can be found here: www.burningman.org/gate

NO EARLY ARRIVALS

If you arrive in the hours before 12:01 am Sunday, August 26, you have the option of parking in the Staging Lot on Gate Road. This will give you the opportunity to rest, stretch your legs, retrieve tickets from Will Call, and meet your neighbors. Before the Gate officially opens, a special Strike Team is dispatched to open up extra lanes to process vehicles in the Staging lot. This highly experienced team of Gate staff will quickly check your tickets, search your vehicle, and route you back onto Gate Road. Please **DO NOT** wait on the side of the road along Hwy 447 or CR 34 or in Gerlach or Empire. The Staging Lot on Gate Road is your best option if you arrive early. Think of it as a transition zone from the default world to BRC.

PROHIBITED ITEMS

YOU MAY BE DENIED ENTRY IF YOU BRING ANY OF THE FOLLOWING:

- Explosives, aerial flares, rockets and fireworks
- Firearms of any kind including BB guns, air rifles and paintball guns
- Hand-held lasers (all other lasers must be registered)
- Items that cause MOOP, wood chips, loose feathers, tubs of confetti
- Anything that will break up and/or blow away in the wind
- Unregistered Mutant Vehicles
- Plants, living or dead
- ATVs and scooters
- Motorcycles that are not a participant's transportation to BRC
- Animals

BELONGS TO ALL OF US

Recently some challenges have been threatening the fabric of our community. Participants abandoning bikes in incredible numbers (Bikes are MOOP, too, if you abandon them). Inconsiderate use of electric bikes. (The 5 mph speed limit applies to e-bikes, too). An alarming increase in fashion shoots on the playa. And a growing tendency for folks to focus on big art and spectacle.

We must work together to preserve and protect the ethos that defines Burning Man and sets it apart from music festivals and other mass-produced events. Whether it's your first time in BRC, or you haven't gotten the playa dust out of your fun fur coats from the past twenty years, **WE NEED YOUR HELP.**

Black Rock City will be better (and you'll have more fun) if you

- 1 **FIND A WAY TO CONTRIBUTE.**
- 2 **COME PREPARED!**
- 3 **BE KIND TO YOURSELF AND OTHERS.**
- 4 **AND, MOST IMPORTANTLY, LEAVE NO TRACE. THE FUTURE OF THE EVENT DEPENDS ON THIS, AND ON YOU. DO YOUR PART!**



BLACK ROCK CITY INFRASTRUCTURE

ON PLAYA RESOURCES

*LIKE ANY METROPOLIS, BLACK ROCK CITY
HAS ESSENTIAL INFRASTRUCTURE &
COMMUNITY SERVICES.*

ICE SALES

Ice is sold at Arctica in Center Camp, and in the 3:00 and 9:00 plazas now on G. During the event, Monday to Saturday hours are 9 am to 6 pm and Sunday noon to 6 pm; Exodus Monday only at Center Camp Arctica from 10 am to noon. Ice is available in crushed and blocks for \$4/bag. Pre-event, ice is available at Center Camp Arctica from Thursday through Sunday, noon to 6 pm, and at Ice 9 on Saturday and Sunday from noon to 6 pm.

INFORMATION

Playa Info in Center Camp is staffed by knowledgeable volunteers ready to answer your questions 9 am to 6 pm, unless otherwise posted. You can use the Playa Info Directory 24/7 to register yourself and your camp location and look up friends, or find and post theme camp locations, event schedules, rideshares, services, and information. Note: there is no Internet access. Playa Info's large BRC map shows public theme camp locations, and bulletin boards are available for posting events, messages and general information.

EARTH GUARDIANS

Earth Guardians inspire Burners to embrace Leave No Trace and live more sustainably on and off the playa. If you have questions about sustainable camping or the Black Rock National Conservation Area, visit them on the Esplanade or check out their website at www.earthguardians.net.

LOST & FOUND: LABEL IT

Mark your possessions with your name, phone number, email address and camp location, **especially your cell phone**. You can take a picture of your contact info and leave the image on your camera or cell phone, but labeling them on the outside is better. If you find something in Black Rock City, bring it to Lost & Found at Playa Info. Lost & Found does not accept found bikes! **Please leave them where you found them.** After the event, if you have lost something, visit Inf.burningman.org

LAW ENFORCEMENT

BLM Rangers and Special Agents and Pershing County Sheriff's Deputies are on site to serve the community by enforcing local, state and federal laws.

CRISIS INTERVENTION SERVICES

Black Rock City can be a hyper-stimulating place. If you're feeling overwhelmed, trained counselors from the Zendo Project and the Green Dot team of the Black Rock Rangers are there to take care of you. If it's a crisis, the Emergency Services Department's Crisis Intervention team is there, too. The Zendo facilities are entirely run by participants and are located at Esplanade and 5:45, between Rangers and BMIR.

BMIR 94.5 FM

Burning Man Information Radio (BMIR) 94.5 FM broadcasts travel, emergency and general information and community programming 24 hours a day. BMIR will also be available on mobile devices via IHeartRadio.com, providing traffic reports at the top of the hour during entry and Exodus. Stop by BMIR between 12 pm and 4 pm daily to record promos for your events and happenings... tell the city what you're up to!

EMERGENCY MEDICAL SERVICES

As a member of a community built on self-reliance, YOU are responsible for your own health and basic first aid. We can't stress this enough—bring your own first aid kit and medications, stay hydrated, and act responsibly. Please don't overwhelm our medical staff with minor complaints and requests for over-the-counter supplies or medication—you should bring these in that first aid kit! However, if you or someone you know (or encounter) requires medical assistance beyond what you or your camp can provide, you may contact an Emergency Services Department volunteer or a Black Rock Ranger, or visit one of our six Medical Stations. Stations are located at 5:15 and Esplanade and behind the 3:00 and 9:00 Plazas. We also have satellite stations behind the 4:30 and 7:30 Plazas on H, and between the Temple and the Man. All are easily identified by a large lit red cross. Trained emergency medical personnel are on duty 24 hours a day.

DON'T SHIP PACKAGES TO THE BURNING MAN OFFICE IN GERLACH

If you need a package delivered to Gerlach via USPS, you can send it via General Delivery, Gerlach, NV 89412. Burning Man has no way to deliver USPS, FedEx or UPS packages to participants on playa. Any participant packages sent to the Gerlach Burning Man office or post office box will be returned.

BURNING MAN 365 DAYS A YEAR

BURNING MAN PROJECT IS A NONPROFIT ORGANIZATION DEDICATED TO ENCOURAGING CIVIC PARTICIPATION, CREATIVE SELF-EXPRESSION, AND COLLABORATION. IT DOES SO BY SUPPORTING AND NURTURING BURNERS AROUND THE WORLD WHO WANT TO ENGAGE IN A HOST OF INITIATIVES AND PROJECTS INSPIRED BY THE 10 PRINCIPLES. TO LEARN MORE ABOUT BURNING MAN PROJECT, BURNERS WITHOUT BORDERS, BLACK ROCK LABS, AND THE BURNING MAN REGIONAL NETWORK, OR TO GET INVOLVED WITH YEAR-ROUND AND WORLDWIDE EFFORTS, VISIT THE EVERYWHERE/ARTERY PAVILION NEAR 6:20 ON THE ESPLANADE AND/OR WWW.BURNINGMAN.ORG.



VOLUNTEERING

Volunteering is a great way to step up your participation, and there are ample opportunities to get involved. Visit the V-Spots in the Center Camp Portal, or in the 3:00 and 9:00 B plazas to learn more.

PRESS & MEDIA

Any commercial, editorial, or otherwise non-personal use of photos, video, or sound recordings is not permitted without written permission from Burning Man. All media professionals, photographers, or videographers with intent to distribute content publicly (including art galleries, publications, or non-personal blogs or vlogs) must register as professional media prior to the event and check in at Media Mecca. Participants sharing images for personal use are not required to register, but still must adhere to the Photo & Video Rights & Responsibilities. It is your responsibility to **ask for consent** before taking someone's picture. Questions? Visit Media Mecca at Center Camp, www.burningman.org/press or write press@burningman.org for more info.

CENTER CAMP CAFÉ

The Café is our community gathering space, where coffee, tea and other nonalcoholic beverages are available for purchase, and your fellow citizens provide a wide variety of on-stage entertainment. It's always a bustling place, 24 hours a day!

AIRPORT & PILOT POLICIES

Black Rock City Municipal Airport is a temporary, private airport (FAA identifier 88NV) at Point 5 of the pentagon fence. The Airport is operational from 6:00 am PDT - 6:30 pm PDT daily during the event. Passenger drop offs and pick-ups are prohibited except by Mutant Vehicle or Airport Shuttle. Do not drive your vehicle to the Airport. Do not leave bikes at the Airport. To find the Airport take 5:00 to L and follow the signs toward Point 5. Any pilot wishing to fly to BRC must land at 88NV and comply with all Airport rules. All pilots must pre-register at airport.burningman.org. All aircraft occupants must have a valid Burning Man ticket and pay the \$60 per-person airport use fee. Will Call tickets can be picked up at the Airport after between 7 am - 7 pm.

BURN GARDENS

Metal platforms for burning wood are located at Esplanade and 3:00, 6:00, and 9:00. From Sunday, September 2, at 10 am through Tuesday, September 4, the Burn Garden location will be available for wood burning as well as donations of new and unused lumber. Wood only! No burning cardboard, paper, compost, recycling or trash will be accepted. Burning toxic and/or synthetic materials such as couches, stuffed furniture, rugs, PVC pipes, etc. is prohibited by law. Burn Garden attendants will be on hand to direct your wood-burning needs.

IN AND OUT FEE

Casual traffic in and out of BRC is strongly discouraged. Participants who leave and return by private automobile are required to pay a \$20 per person fee.

TELEPHONE SERVICE

In the interest of Immediacy (see the 10 Principles), cell phone use is highly discouraged in BRC. Limited cell service and public telephones are available in the town of Gerlach, 12 miles away.

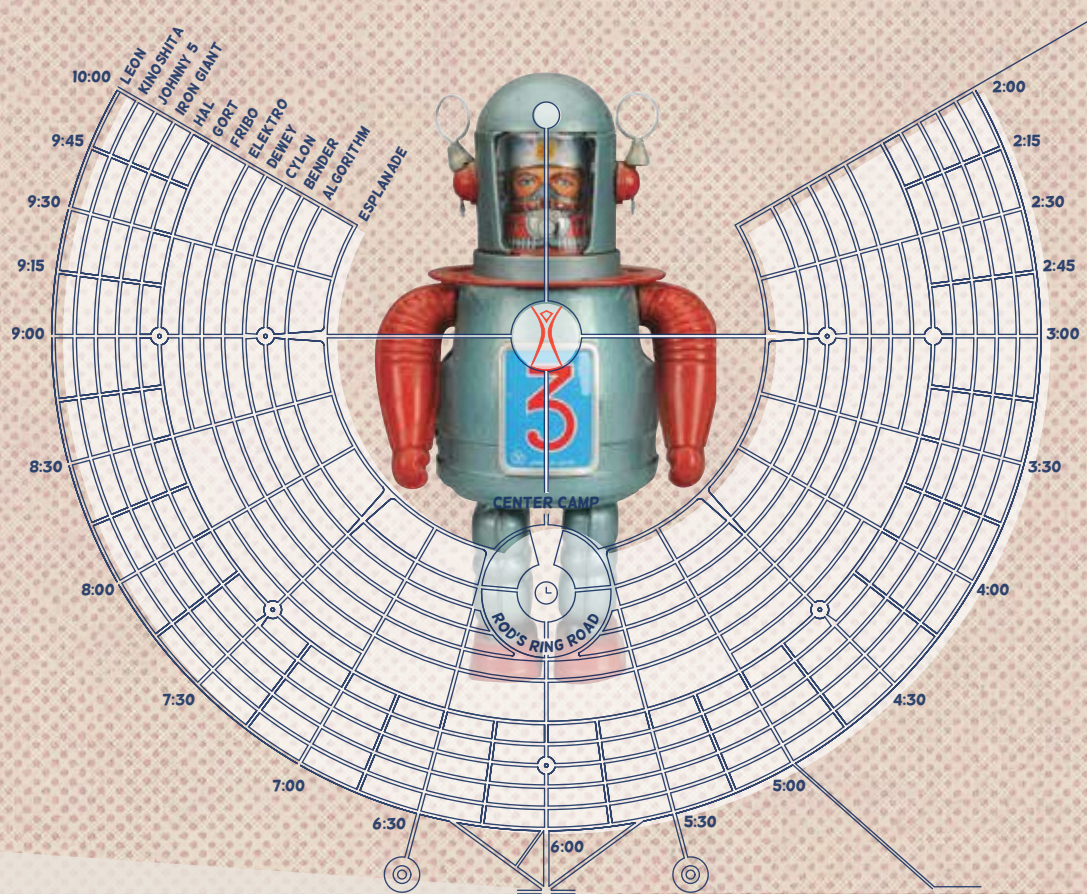
RECYCLE CAMP

Pre-crush and sort your empty ALUMINUM cans into a mesh bag (so they dry out!), then bring them to Recycle Camp between 9 am and 5 pm, Monday through Sunday (closed Labor Day!), directly behind the Center Camp Café at 6:00. Come ride the CRUSHINATOR: our juicy, state of the ART bicycle-powered aluminum can crushing machine. Come by early (don't wait until the last day!), come by often (we have great fun!), but by all means come by before 5 pm Sunday or you'll have to pack them out yourself. No plastic, tin, or steel please. All proceeds are donated to the Gerlach School.

CARPOOLING

Looking for transportation to the event? Consider carpooling and ride-sharing. Carpooling is a great option for those with extra vehicle space and is also an easy way to share costs. Burner Express buses come from Reno and San Francisco directly to the playa. Visit burningman.org/travel. Burner Express Air flights arrive in Black Rock City from Reno, Burbank and the Bay Area.

BLACK ROCK CITY LAYOUT



2018 CITYPLAN

BRC consists of the main camping area formed by a series of concentric and radial streets, and an “open playa” reserved for art installations. BLM establishes a buffer zone on the playa around the event site—no camping is allowed in this area. The 2018 BRC plan will be posted before the event at burningman.org/event/black-rock-city-guide/. You will receive a BRC map at the Greeter’s station when you arrive.

PLAZAS

Plazas are located on either side of the city at 3:00 & 9:00 on Bender Street. These are mini civic centers with art installations, service camps, First Aid Stations and Black Rock Ranger Outposts. A mid-city ring of plazas are located on Gort Street at 3:00, 4:30, 7:30, and 9:00, and on Iron Giant Street at 6:00. These Plazas are public gathering spaces encircled by creative and inviting theme camps. Arctica ice sales are stationed at Gort at 3:00 and 9:00.

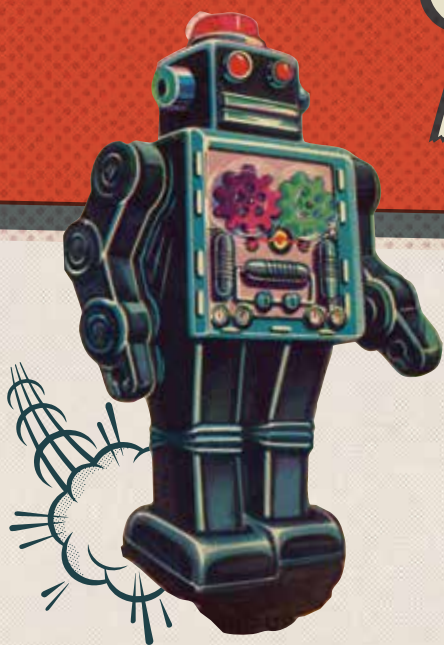
WALK-IN CAMPING

A large area past Leon Street between 2:00 and 5:00 is reserved for Walk-In Camping. Camp without cars! No vehicles or RVs are allowed. You must leave your vehicle and carry your belongings to your chosen spot. The sheer difficulty of this exercise keeps Walk-In Camping sparsely populated, and your efforts will be rewarded with a sense of solitude unavailable in other parts of the city.

PORTA-POTTIES

Banks of porta-potties can be found throughout the city on radial streets on the blocks between C & D and H & I. The exceptions to this are 6:00, which has banks between F & G, and I & J, and 3:00 and 9:00, which have banks between E & F. There are also banks on the open playa on either side of the Man along 2:00 and 10:00, and out by the Temple. To help you find potties in your time of need, they are marked by solar-powered light poles topped with blue lights. It’s a good idea to stop periodically and orient yourself to the closest potties (you’ll be glad you did).

GETTING AROUND



Black Rock City is a walking and bike-friendly metropolis. You must park your vehicle at your campsite and leave it there while you are at Burning Man. Only public agency vehicles, specially marked BRC department service vehicles, and vehicles licensed by the Department of Mutant Vehicles (DMV) are allowed to drive in Black Rock City or on the open playa. Any non-mutated vehicles intended for recreational driving, including motorcycles, large scooters, golf carts, and ATVs, are NOT permitted and will be impounded at the Gate.

MUTANT VEHICLES & THE DMV

All prospective Mutant Vehicle drivers, and those requiring a disabled license, must pre-register with the DMV before the event. No uninvited Mutant Vehicles will be licensed on-site—If your vehicle was not invited, it will not be licensed. You are required to show your acceptance letter to Gate staff upon entering BRC—those not pre-registered and approved WILL NOT be let into BRC. For more info see: burningman.org/event/art-performance/mutant-vehicles/.

DRIVING SAFETY

The speed limit in BRC is 5 mph at all times—that's reeeaaaally slow—including when entering from Gate Road and departing BRC. Pedestrians and bicycles have the right of way over powered vehicles. Passengers may only get on or off a vehicle that is completely stopped.

Vehicles are prohibited from driving on: the Esplanade, Algorithm Street, the promenades from the city to the Man and the Temple, and inside the perimeter around the Man. All Mutant Vehicles must also comply with the Sound Policy stated on the Burning Man website.

ELECTRIC-ASSIST BIKES

Electric-assist bikes are allowed on playa, but you must obey the 5 mph vehicle speed limit and they must conform to all specifications of Nevada state law.

ELECTRIC SCOOTERS & SEGWAYS

These vehicles are subject to the same rules as any other motorized vehicles, including the 5 mph speed limit and use of front and rear lights at night. BLM Rangers will issue citations for noncompliance.

MOTORCYCLES

Motorcycles are only allowed in BRC if they were your sole means of transportation to BRC, and must be parked at your campsite for the duration of your stay. Participants bringing motorcycles that aren't their sole means of transportation will be asked to turn around at the Gate.

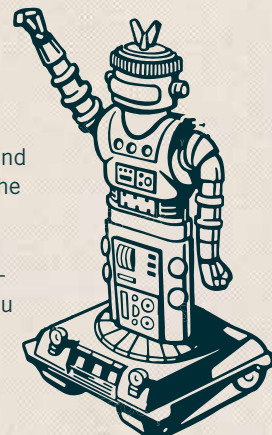
If you have any question whether a particular vehicle is allowed to drive at Burning Man, please email the Department of Mutant Vehicles at dmv@burningman.org.

HAPPY BICYCLING

Bikes are an integral part of our culture. Our city was designed for walking and biking. The playa is very dark at night and there are many riders. Light your bike to avoid injuring yourself and others. Please do not bring bikes, chairs or large coolers to the larger burns, where they can pose a serious tripping hazard.

LOCK & DECORATE YOUR BIKE!

We recommend locking your bike when it's not in use. Never lock your bike to guy wires around the Café, art pieces or any other structures. This is a safety hazard and may disrupt performances and scheduled burns. No bike is considered lost until the event is over. Starting Monday through Wednesday post-event, lost bikes can possibly be recovered at Yellow Bike Camp (A & 5:15). After Wednesday, unclaimed bikes are donated to Reno-based nonprofits that repair and provide them to underprivileged kids. Your bike is much less likely to be "borrowed without asking" if you decorate it. Make sure decorations are securely affixed. DO NOT ditch your bike at Burning Man! Dealing with abandoned bikes stretches our already over-taxed resources. Send additional questions to bikes@burningman.org.





LEAVE NO TRACE

THE BLACK ROCK DESERT IS A PLACE UNLIKE ANY OTHER

—a wide expanse of possibility set in the heart of the Black Rock Desert-High Rock Canyon Emigrant Trails National Conservation Area. This is part of the nation's prized National Conservation Lands, a special designation given by the U.S. Government to some of the most scenic, culturally rich, scientifically important and yet least known public lands in the country. We are proud to build Black Rock City in this stunningly beautiful location and equally committed to respecting and protecting this special place.

Burning Man is the largest Leave No Trace (LNT) event in the world. It is up to all of us to remove all Matter Out of Place (MOOP) from Black Rock City. There is no garbage collection service in BRC—we are all responsible for properly removing all trash. Everything you bring could become trash: tent stakes, bottle caps, ashes, wood debris, orange peels, cigarette butts, pistachio shells, rope fibers, sequins—even abandoned bikes. Our permit with BLM allows us a short period of time to restore the playa to its original condition. We can only satisfy BLM stipulations and pass inspection if ALL citizens share in the responsibility to line-sweep their camps and the city.

Burning Man has a volunteer-led environmental compliance and LNT outreach team, made up of Earth Guardians and Black Rock Rangers. Now in its fifth year, this team educates and helps participants fix common environmental issues such as vehicle oil leaks and wastewater spills. Burning Man must do this to comply with the terms of our permit. Help us help you. If our team finds an issue, you'll be given a limited amount of time to fix it. You may face a citation or eviction if you don't address oil and wastewater spills. If you need help, visit the Black Rock Rangers and Earth Guardians. We are here to help.

PLAN AHEAD

START YOUR LNT EFFORTS BEFORE YOU DEPART FOR BLACK ROCK CITY:

- Prepare a Leave No Trace plan AND a cleanup plan for your camp; LNT as you go and have less to clean up and restore before you leave.
- Pre-cycle by removing excess packaging from everything before you pack it.
- Don't bring loose glitter, feather boas, Astroturf, styro-foam coolers, plastic bags, paper, string, disposable drink cups, hay bales, straw, gravel—or anything else that can blow away in the wind or turn into a MOOPy mess.
- Don't bring glass containers of any kind—they can shatter. Metal bottles and plates work well.
- Replace disposable plastic bottles with five-gallon collapsible or other large water containers and refillable water bottles.
- Smokers: use a portable ashtray (like a mint tin) to collect cigarette butts and ashes (yes, ash is MOOP!). NEVER drop butts on the playa.
- Bring tarps to put under MOOP-heavy areas like kitchens, construction areas and workspaces. Avoid MOOPy carpets and Astroturf.
- Bring rope or tie-downs to secure everything in your camp, and to securely strap down your load on top of your vehicle.
- Pack work gloves to help you pick up the sharp bits and a magnet rake to pick up metal.
- BYOC: bring an easy-to-carry cup to use at the Café and out in BRC. Note: If you bring your own bottled or canned beverages, take drink containers back to your camp or to Recycle Camp where you can recycle your aluminum cans.
- Make an evaporation device (see burningman.org/event/preparation/playa-living/gray-water/ for some great ideas) to properly dispose of your gray water. Do not dump gray water onto the playa. See the Burning Man website for collection, treatment, and disposal alternatives, and page 19 for places to take your gray water after the event.

WOOD IS MOOP!

**WOOD DEBRIS IS
THE #1 MOOP AT
BURNING MAN!**

PREVENTING MOOP

- Never let it hit the ground! If you see trash on the ground, pick it up and take it—the dust quickly makes it hard to spot.
- Put a weight on or tie down anything that can blow away.
- If you have an RV, bring a five-gallon bucket to catch any gray or black water leaks from your plumbing.
- Waste water dumping is illegal! You may receive a citation for dumping gray water or black water.
- Sort trash and recycling for easy drop-off at collection centers on your way home. See page 19.
- Make a MOOP collection bucket. Cut a 3" hole in the top of a plastic water jug, leaving the handle intact. Sweep dust containing glass, wood chips, bark or anything too small to pick up into a dustpan and deposit in the bucket for disposal at home.
- Always carry a bag to collect any MOOP you find while walking or biking around BRC.
- If you plan to use a burn barrel, bring a shovel and metal containers to scoop up and remove ashes. All burn barrels must be elevated 10" off the playa surface to prevent burn scars.
- WOOD IS MOOP! Wood is the #1 MOOP issue in Black Rock City. Wood from sawdust, splinters, wood debris and firewood bark poses a major MOOP problem. Help keep the playa beautiful by laying down a tarp or rug under your wood cutting stations and firewood storage areas.

BEFORE YOU LEAVE

- Line-sweep your camp. Walk shoulder-to-shoulder with your campmates and clean your campsite in a grid pattern. Pick up EVERYTHING. Use a magnet bar or rake to go over your entire camp and conduct a final sweep.
- Community Clean-Up. As a citizen of BRC, we ask you to join your neighbors on Sunday and Monday after the Burn for two hours of MOOPing in addition to your own camp clean up. Pick a well-traveled area. The Earth Guardians in Center Camp can direct you to a cleanup project.
- Cover and secure your load! Pack carefully and make sure trash and other items do not blow off and litter our highways.

ON YOUR WAY HOME

- Leave No Trace does not end when you hit the pavement. Do not dump your trash in neighboring communities (yes, this has actually happened). See page 19 for waste and recycling locations.
- Stop periodically and check to ensure your load is secure!

THE ENVIRONMENT

Burning Man believes in protecting the environment and making the event more sustainable—but we need YOU to help make that happen. The Leaving No Trace section of the Burning Man website is a treasure trove of tips for practicing the 6 R's: Rethink, Reduce, Reuse, Recycle, Respect & Restore! Visit burningman.org/event/preparation/leaving-no-trace/greening-your-burn/.

ON PLAYA: CHECK FOR OIL LEAKS

Engine oil leaks are common, especially in older vehicles, and they harm the playa. If your engine oil is leaking on the playa, use a drip pan, tarp, rug, plywood, or anything that can be secured to the ground so it catches the oil. You can be cited for oil leaks.

WASTE WATER

If you have a wastewater spill and the contaminated playa fits in a five-gallon bucket, dig up the soil and dispose of the bucket off site. If it's too much for a bucket, get help. Call a Black Rock Ranger to contact our Hazmat team to help remediate the site.

BURN SCARS

A burn scar is a discoloration of the surface soil due to contact with fire. They can last for years and over time they form bumps, which are hazardous to vehicles. It's your responsibility to prevent them. Never start a fire directly on the playa surface. It will create a burn scar and BLM will issue a citation. A fireplace, burn barrel, or BBQ (in permitted areas only) may be used for small fires.

BURNING ART

We love fire at Burning Man, but we must burn safely. You must register to burn your art with the Art Department and the Fire Art Safety Team (FAST) prior to arriving at the event. You may not burn art directly on the playa. Consider reducing CO₂ emissions by not burning your art and instead repurposing it or recycling the materials. Burning public structures such as lampposts or bulletin boards, or other people's artwork is prohibited. Artists have the sole right to burn their own creation. Whether you want to have a fire barrel, burn your artwork, or incorporate flame effects in your artwork or Mutant Vehicle, you must follow our Fire Art Safety Guidelines at burningman.org/event/art-performance/fire-art-guidelines/.

FUEL STORAGE SAFETY

Protect the playa surface from fuel spills. Fuel expands with heat. Never fill your fuel containers past 80%. All containers, regardless of size, must be stored within "secondary containment" basins. These basins must be capable of holding 110% of the volume of the largest single fuel container stored within it. Participants using fuels in an art installation or storing fuel in camp must comply with best practices for storing and handling these materials: burningman.org/fuel-hazmat. Questions about fuel? Contact fuelsafety@burningman.org.

DIGGING HOLES

Do not dig holes in the playa larger than six inches wide and two feet deep for ANY purpose. Larger holes erode within a year's time, even when carefully backfilled, leaving a visible mark and creating a safety hazard to drivers. Use an auger or a posthole digger, NOT a shovel. Bag the dirt so it doesn't blow away. Refill the hole by tamping the soil back into place (an inverted sledgehammer works well). Repeat this process every few inches while dampening the soil.

HISTORICAL ARTIFACTS

The collection, excavation or vandalism of archaeological artifacts is prohibited on public lands. If you find something that appears to be an authentic artifact, contact a Black Rock Ranger.

SURVIVING

BLACK ROCK CITY



The Elements

BEATING THE HEAT [& COLD]

The Black Rock Desert is a flat, prehistoric lakebed, composed of a hardpan alkali, ringed by majestic mountains. Daytime temperatures routinely exceed 100°F, and the humidity is extremely low. Because the atmosphere

is so dry, you may not feel particularly warm, but you'll be steadily drying up. Lip balm and lotion are your key to comfort.

At nearly 4,000 feet above sea level, you will burn much faster and more severely than at lower elevations. Apply sunscreen every morning and repeat as needed. Be sure to have some kind of shade for your camp and lie low during the hottest part of the day. But when the sun drops over the horizon, temperatures can quickly plummet 50 degrees. Overnight lows can be in the 40s, so bring warm clothing and a good sleeping bag.

It takes nearly everyone a day or so to adjust to the desert climate. Don't be surprised if you spend your first day feeling queasy and cranky. **DRINK WATER!** Begin drinking a lot of water when you leave for the playa. To stay healthy and enjoy the week, drink water whether you think you need it or not. One and a half gallons of water per person per day is a good rule of thumb.

Eat salty foods to prevent electrolyte imbalance. Consuming alcohol, caffeine or other drugs increases risk of dehydration. Dehydration can cause headaches, stomach cramps, abdominal pains, constipation, flu-like symptoms, and mood swings, and makes it difficult for the body to recover. If someone complains of these symptoms, or shows signs of either severe overheating or (worse) a case of chills under the midday sun, get them to shade immediately and seek prompt medical help at one of the Medical Stations (see page 4 for locations and info).

WHITEOUTS

The playa can be subject to sudden bouts of fierce, unpredictable weather. Storm cells may bring high winds, lightning and rain. Dust storms prowl the playa and can produce instant "whiteouts." Long, sustained rainfall or prolonged white out conditions are unlikely, but you should be mentally and physically prepared for such occurrences. If you're caught in a white out:

- Seek immediate shelter and stay there. Now's the time to use those goggles you brought.
- If you're far from shelter, sit down, cover your face with your shirt, turn your back to the wind and wait.
- Be alert for moving vehicles. If you are driving a vehicle, stop and wait for the air to clear. You will not be able to see where you are going and could hurt yourself or others.

RAINSTORMS

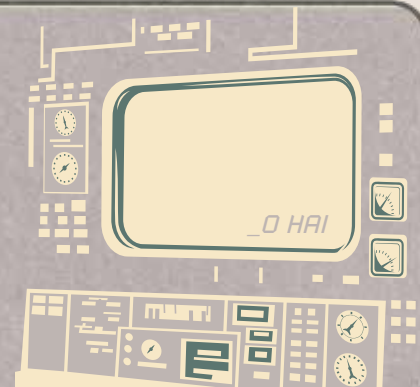
- **DO NOT DRIVE** your vehicle. You will become stuck and tear up the playa surface.
- **DO NOT RIDE** your bike; playa mud clogs wheels and gears in just a few feet.
- Stay put and tune into BMIR, 94.5 FM for the latest info.

WATER

BRC does not provide water. Bring 1.5 gallons of water per person per day for drinking, washing and cleaning. Always carry a full water bottle when you leave camp. Public pools and showers are not permitted. Water for private use that entails full body contact or consumption must be potable and come from Nevada State Health Division-approved water sources.

LIGHTING YOURSELF AT NIGHT

The playa is dark at night, and it's very easy to run into people or things you can't see, like unlit art installations, pedestrians, or bikes. Imagine being the driver of a Mutant Vehicle trying to navigate safely around the playa and there you are, walking or riding around with no lights. **NOT SAFE. NOT COOL.** Light yourself, your bike, your art and your belongings well (front and back). Consider a good LED headlamp, LED blinky lights, or EL wire. Weak glow sticks and bracelets don't cut it and become instant trash and potential MOOP.





PERSONAL SURVIVAL CHECKLIST

YOU MUST BRING



- | | |
|--|---|
| <ul style="list-style-type: none"> ☀ Your ticket or your photo ID and confirmation number for Will Call ☀ 1.5 gallons of water per person per day ☀ A reusable water bottle ☀ Food & drinks ☀ An extensive first-aid kit (burningman.org/event/preparation/health-safety/first-aid-kit/) ☀ Sunscreen/sunblock & sunglasses ☀ Warm clothing ☀ Dust mask ☀ Goggles to protect eyes during dust storms ☀ Rope or tie-down straps ☀ Emergency toilet: bring a five-gallon utility bucket with lid and garbage bag liners ☀ Hand sanitizer | <ul style="list-style-type: none"> ☀ Garbage and recycling bags, and tools to clean up your camp ☀ Duct tape—you'll find a need for it, guaranteed ☀ Flashlights and spare batteries (headlamps are useful) ☀ Lights for your bike and your person for safe nighttime travel ☀ A tent or other shelter and warm sleeping bags and bedding ☀ Portable ashtrays (e.g., mint tin that closes securely) ☀ Prescriptions (in their original dispensing container), contact lens supplies (disposables work great), and anything else you need to maintain your health in a remote area with no services ☀ Fire extinguishers to protect your camp and property, and if you plan to burn your art ☀ Common sense, an open mind, a sense of humor and a positive attitude |
|--|---|

YOU SHOULD PROBABLY BRING

- | | |
|--|---|
| <ul style="list-style-type: none"> ☀ Shade structures, parasols, sheets; something to break the midday sun ☀ A wide brim hat (a chinstrap is useful in the wind) ☀ Cooking stove if you expect to heat food or liquid ☀ A bicycle (mountain bikes or cruisers with balloon tires are best) ☀ A bike lock (tag your bike with name, playa address, email and/or phone information) ☀ Bicycle tire repair kit, pump, spare parts and extra tubes ☀ Portable shower with a drain system to collect gray water ☀ Lotion, lip balm and earplugs (not everyone will want to sleep when you do!) ☀ Watertight protective bags (e.g., heavy zip-type) for cameras and electronic gear | <ul style="list-style-type: none"> ☀ Costumes, musical instruments, props, decorations, and anything that might make the experience more fun for you and your playa neighbors ☀ A battery powered AM/FM radio so you can listen to BMIR radio and stay informed ☀ Camp marker (flag, banner, distinctive marking) ☀ 12" tent stakes (rebar is cheap and effective in high wind) ☀ Plastic bottles or tennis balls to top and protect dangerous rebar stakes ☀ Extra set of car keys (keys are easily lost, and there is no locksmith in BRC!) ☀ A reusable travel coffee mug for your trips to the Café ☀ A five gallon bucket (to MOOP, pick up waste or protect your stuff from rain) |
|--|---|



HOW TO BE A GOOD CITIZEN OF BLACK ROCK CITY



BATTEN DOWN YOUR CAMP

The desert wind can whip up to speeds exceeding 75 MPH in an instant, picking up everything and hurling it miles down the playa or smack into your neighbor—tents, chairs, card tables, ice chests, you name it. Keep objects secure at all times. Weight the interior corners of your tent. Rebar makes excellent stakes, but all exposed ends must be capped or bent into a candy cane shape to prevent foot or leg injuries. Rebar tips (including removal) are found on the Burning Man website.

RVS

There is no recreational vehicle dumping station, and you may not dump on the playa. BLM issues citations for dumping or leaking gray or black water. As a citizen of Black Rock City, you are responsible for preventing and remediating leaks. Catch leaks immediately with a five gallon bucket. There is no location for scheduling RV servicing. If you see a truck designated “RV servicing,” you can flag them down. Many trucks are servicing infrastructure and not RVs, so be sure look for the sign. The only vendor authorized to provide cash sales of pumping services is United Site Services. Note: pumping services only include removal of gray and black water—not a potable water fill. Use only one-ply toilet paper. Finally, be considerate of your neighbors when running your generator.

COMMERCE & CONCESSIONS

The sale of products or services by participants is strictly prohibited. Sales of handmade and food items “in order to cover costs” are not allowed. There is NO participant vending. Bring everything you need. Confront your own survival. **This is not a consumer event.**

LOGOS & BRANDING

Burning Man is a decommodified zone where branding is not welcome. Advertising? Hell no. Launching a product? Not in Black Rock City. Burning Man is not (and will never be) something to be used in promotion of your business, website, or product. Got a van from work with logos? Cover it up. Got a rental truck or RV? Alter the logos. Taking pictures of a product on playa to promote it online? That’s not even close to being okay. It is on all of us to foster a community where Decommodification and Civic Responsibility are valued and upheld.

DOGS & OTHER ANIMALS

Dogs are not permitted. If you show up with your dog, you will not be admitted to the event. This restriction is for the well-being and safety of participants and their four-legged friends. Burning Man is a loud, tumultuous, and scary place for any animal—do not bring them with you.

DON'T STEAL STREET SIGNS

Emergency Services rely on street signs to navigate our city when responding to emergencies, and participants count on the signs to find their way around. All signs must remain in place through the Temple burn on Sunday night. Seriously folks, we need your help stopping the rampant theft of street signs early in the event. Recently signs are being stolen right when the gate opens. If you see this happening, say something—this is your city!

CHILDREN & FAMILIES

Burning Man has always been a family affair. Kids are an important part of our culture in BRC and around the world. Parents are responsible for their children's well being at all times. If a child goes missing or you encounter a lost child, alert a Black Rock Ranger. The large burns can be especially chaotic—please make sure you know where your kids are and have a plan for where to meet if you get separated. Always be respectful and aware of the presence of children in BRC. “Kidsville” is a large camp for families located at 5:00 between Elektro & Gort. If you are interested in camping with Kidsville, learn more at www.kidsville.org. If you are not a family-friendly camp, please locate yourself far away from it. For more info, contact kids@burningman.org and check out our Survival Guide specifically for families found at: burningman.org/event/preparation/playa-living/kids/.

CONTRIBUTE

Burning Man is not a festival. Burning Man is a community. A temporary city. A global cultural movement based on 10 practical principles. We don’t book acts or provide entertainment. What happens here is up to you! There is no corporate sponsorship. You are entering a “decommodified” space that values who you are, not what you have. You are expected to collaborate, be inclusive, creative, connective and clean up after yourself. Participate actively as a citizen of Black Rock City.

CAMERAS IN BRC

Using a camera in Black Rock City comes with important responsibilities. As a condition of entry to BRC, participants who are filming or shooting photos agree not to interfere with the experience of others and to ask permission before photographing or recording anyone. Pictures from BRC may not be used for any commercial, promotional, editorial, or otherwise non-personal reasons without first registering as professional media and receiving Burning Man's permission.

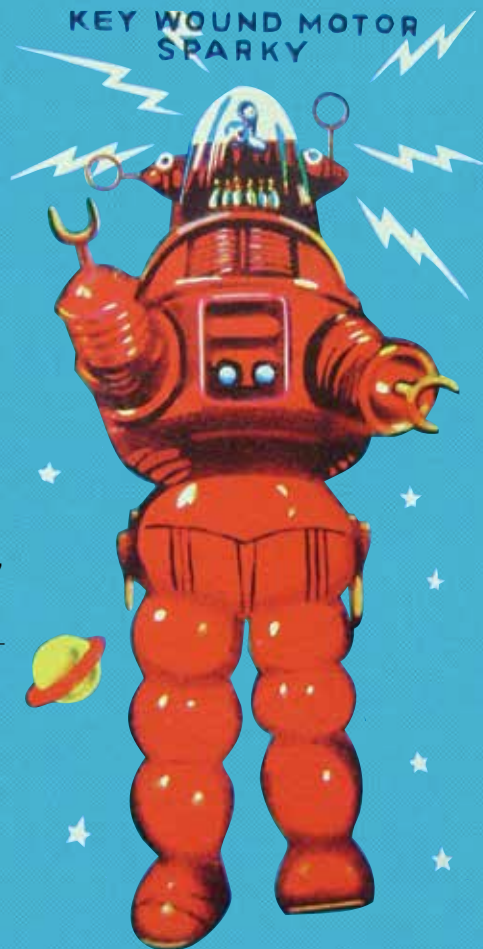
Burning Man limits media at the event to protect participant privacy and prevent our culture from inappropriate exploitation. All permitted professional media will be credentialed and their cameras tagged with a unique Media ID #. If someone is being disrespectful with a camera, record their Media ID # and report them to Media Mecca (at 10 o'clock on the inner ring, across from Center Camp Cafe). If they do not have a Media Tag, find a Black Rock Ranger immediately. If you find a picture of you or your images from Burning Man being used without your permission, contact press@burningman.org any time during the year.

PROTECT YOUR BELONGINGS

Secure your valuables when away from camp, especially on Burn night. Consider locking valuables in your car. Take pictures of your valuables, record serial numbers, and report them missing immediately if stolen; police can't easily investigate otherwise. (Tip: Make two spare door keys—hide one and carry one.) Introduce yourself to neighbors and local Black Rock Rangers. Work together to keep your neighborhood secure.

PERSONAL BOUNDARIES

Black Rock City can be an erotically charged environment, particularly for first timers. You can help prevent sexual harassment and assault while ensuring sex-positive free expression thrives. Know and express your boundaries. Ask about and respect the boundaries of others. Look out for each other, including anyone you encounter who might be in distress. If you see behavior that concerns you, contact a Black Rock Ranger.



YOUR WELL-BEING

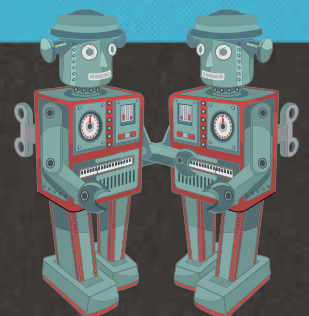
BRC is not immune to the potential dangers of drug and alcohol use and misuse. Burning Man and its partners in health and safety, including law enforcement, believe in the importance of harm reduction. Here are some things to remember:

- Always be hydrating. Bring your own water wherever you go and be sure to get enough electrolytes.
- Get enough sleep.
- Eat healthy, nourishing food.
- If you don't know what's in something, it's best not to drink or eat it.
- Burning Man is better with friends; consider using a buddy system.
- There have been isolated incidents of intentional dosing with intent to assault—sometimes referred to as “date rape.” Participants should be aware of this and exercise appropriate caution.
- If you feel like you've been dosed without your knowledge, seek help immediately.
- If you see someone who appears to be overly intoxicated, ask them if they need help.
- If you or someone around you needs emergency assistance, get help. Black Rock Rangers, medical personnel, and law enforcement officers are there to help ensure your safety.

If you or someone you meet is feeling overwhelmed, there are services in Black Rock City to support you. Volunteers from the Zendo Project and the Green Dot team of the Black Rock Rangers are trained to help people going through challenging emotional or psychological processes. Both groups offer safe spaces in BRC. Seek them out. Remember, Black Rock City is our community, and we all need to look out for each other.

CONSENT

Consent is the cornerstone of a healthy community. It's simple: whether it's a potential sexual encounter, physical touch of any kind, something requiring permission that will radically alter the experience of another person, or involving the recording of someone's image or voice, you are responsible for getting verbal consent before engaging. It is neither ethical nor acceptable to proceed without that person's awareness and clear consent. Period. As the Bureau of Erotic Discourse reminds us: “Silence is not consent.” Black Rock City citizens are encouraged to understand and help others understand the importance of consent. For more info, visit www.bureauoferoticdiscourse.org.



YOUR ROLE IN BURNING MAN'S

LONG TERM SURVIVAL



WHILE THERE ARE PRACTICALLY AN INFINITE NUMBER OF THINGS YOU CAN DO IN BLACK ROCK CITY, THERE ARE SOME THINGS YOU NEED PERMISSION OR A PERMIT TO DO, AND THERE ARE A FEW THINGS YOU CAN'T DO BECAUSE THEY COULD THREATEN THE FUTURE OF OUR EVENT. AS A GOOD CITIZEN OF BRC, WE LOOK TO YOU TO SUPPORT THE LARGER COMMUNITY. PLEASE BE AWARE OF THESE CHALLENGES AND HELP KEEP BRC ALIVE FOR YEARS TO COME.

PORTA-POTTIES: IF IT WASN'T MADE BY YOUR BODY, DON'T PUT IT IN THE POTTY

Portable toilets are provided and emptied regularly. Use these facilities only for their intended purpose, not for dumping garbage or gray water. Putting anything but human waste and one-ply toilet paper (2-ply is a big no-no) in the potties makes pumping nearly impossible. No tampons, trash or wipes! Control odors by putting the lid down. Do not defecate or urinate on the playa; it is illegal and an unpleasant mess for everyone. Finally, if there is a truck servicing a bank of potties, don't interfere with their job by using one of the potties—wait until they are finished.

TRASH IN NEIGHBORING COMMUNITIES

It is critical that we have good relationships with the neighboring towns and communities. Every year the biggest complaint about Burning Man is the trash that flies off vehicles in surrounding areas. Make sure you cover and secure your load really well so nothing flies off as you drive the highways, and DO NOT dump your trash or recycling in our neighboring communities except in designated dumping facilities. We've compiled a list of Exodus Trash and Recycling Locations on page 19. Leave No Trace doesn't end when you hit the pavement. If you see somebody dumping their waste somewhere they shouldn't, let them know. You can be fined up to \$2000 for illegal dumping.

SERVING FOOD

Gifting food or certain drinks, including juice or dairy to the public, or running a kitchen serving 125 persons or more (whether public or private) requires a permit from the Nevada State Health Division. Visit dphh.nv.gov/Reg/Temp-E/Temporary_Events_Home/ and scroll down to "Burning Man - Food." You don't need a permit for bar ice, but your ice must come from a source approved by the Health Division, like local stores or our ice sales. If you have questions on playa, representatives from the Nevada State Health Division are available at Playa Info Saturday, August 25, through Wednesday, August 29 1 pm – 3 pm each day. The Nevada State Health Division protects the health of our citizens and prevents food-borne epidemics. Please cooperate with their lawful inspections of all public food preparation at our event.



RESPECT OUR NEIGHBORS

With nearly 70,000 people traveling through these normally quiet rural towns, we have a significant impact on the communities surrounding the Black Rock Desert. Drive slowly. Be courteous and patient, dress appropriately, and be respectful. We are guests here. Be polite and friendly to all local residents, and remember to Leave No Trace.

PYRAMID LAKE PAIUTE TRIBE

Traveling from the West, South, or East to Burning Man on Hwy 447, you will drive through the Pyramid Lake Paiute Tribe reservation. Please be respectful and supportive of the Pyramid Lake community. Speed limits are strictly enforced. Be courteous to Tribe members as they cross the road or try to access Tribal businesses and services or their homes. Be respectful of the lake and land—they are considered sacred, the lake is home to two types of endangered fish, and artifact hunting and graffiti are prohibited. Leave No Trace!

You must obtain a permit to swim in or camp around Pyramid Lake. Day-use permits are \$10 and camping permits are \$15 per day. Permits may be purchased at the I-80 Smoke Shop in Wadsworth, Nixon Store in Nixon, Ranger Station in Sutcliffe, or at several locations in Reno, Sparks, or Fernley (see below). You can also purchase gas and last-minute supplies at the Wadsworth and Nixon stores. They will be open 24 hours a day just before and just after Burning Man. Tribal members also offer services along the road such as car washes, Indian tacos, food drives, and trash collection. Note, all vendors are required to register with the tribal government. To learn more about the Paiute tribe, including permit info and locations, visit plpt.nsn.us and burningman.org/event/preparation/local-towns.

GERLACH & EMPIRE

The citizens of Gerlach and Empire welcome us. Please be considerate of them in return. Drive slowly. Don't block driveways or streets. There are two gas stations, a market, water store, restaurant, and several street vendors. If you pull over to patronize these businesses, please avoid causing traffic issues. Remember, regular traffic laws apply, and you may be ticketed for obstructing traffic or creating a nuisance. Do not replenish your water supply from a private local spigot. Water is precious in the desert, and this water belongs to local residents. And Leave No Trace! For more info go to burningman.org/event/preparation/local-towns.

HOT SPRINGS

Our BLM permit forbids participants from using the local hot springs during the event. Some are lethally hot! A collaborative team of Earth Guardians and BLM patrol and protect these fragile resources. For more information email earthguardians@burningman.org.

NOISE CONTROL & SOUND POLICY

Sound travels easily on the playa, and not everyone will want to sleep when you do. Bring ear plugs! Audio systems must be held to a maximum power amplification of 300 watts, generating 90 decibels at 20 feet. Speakers must be elevated off the playa surface and be backed by a truck, RV, or anything large and solid enough to prevent the sound from traveling backward. If a problem with sound levels continues after sufficient requests and warnings, the source of power for such device or system will be disabled. Mutant Vehicles are subject to the Mutant Vehicle Sound Policy, and must cut their sound when approaching art installations and performances. The hum of generators becomes annoying over a long period of time. Please keep your neighbors in mind. We recommend generators that are sound insulated, and/or enclosed in a wooden box. DO NOT dig a trench to sound-insulate your generator. For more information visit: burningman.org/event/preparation/playa-living/generators/.

LAW ENFORCEMENT

THIS COULD BE THE MOST IMPORTANT READING YOU DO BEFORE ARRIVING IN BLACK ROCK CITY



The Pershing County Sheriff and BLM are on site to enforce all applicable federal, state and local laws. The roads leading into and out of the event are patrolled by the Nevada Highway Patrol, Washoe County Sheriff's Office, Pershing County Sheriff's Office, and Pyramid Lake Paiute Tribe. It is not the mission of these agencies to police your lifestyle or inhibit self-expression. They fulfill the same function as the police in any other city, and it is their duty to uphold the law—please cooperate.

If you become a victim of crime during the event, report it IMMEDIATELY.

Pershing County Sheriff's Office will respond and investigate. It is imperative you report the crime while on site—it's nearly impossible to investigate a crime post-event when camps, cars, evidence, and witnesses are gone. Insurance agencies require a law enforcement report to file claims of theft.

This isn't legal advice, or a comprehensive list of the regulations and laws that apply in Black Rock City, but here are some tips to keep you safe and avoid citation, arrest, and/or eviction from the premises. For information and advice applicable to a particular situation, you should consult with a lawyer.

- The use and possession of **illicit drugs and drug paraphernalia** are violations of the law. Depending on the violation, you may receive a citation or be arrested and/or evicted from the event. The possession of large quantities or a variety of drugs may be interpreted as evidence of **intent to distribute or trafficking**, a serious felony offense. Giving illegal substances to someone else could also be considered drug trafficking.
- **Prescription drugs** must be transported with the prescription and kept in the bottle you received from the pharmacist at all times.
- **Driving with an open container or under the influence of alcohol (DUI)** is illegal. Nevada's blood alcohol limit (BAC) is .08 for drivers 21 years of age and older, and 0.02 for drivers under 21.
- **Serving alcohol to minors is illegal.** If your theme camp has a bar where alcoholic drinks are gifted, the person serving alcohol must check that any person being served is at least 21. It is a state and local offense for anyone under

21 to consume alcoholic beverages or to try to pass themselves off as being of age. It is a violation of Pershing County law for minors to even possess alcoholic beverages.

- Any act of **assault or theft** is a violation of the law, and may be cited or arrested as a felony offense.
- **Possession or discharge of firearms or weapons** is prohibited.
- **Dumping, leaking or spilling gray water, black water, oil or fuel** is illegal.
- Use of drones is prohibited unless the operator is registered through and complies with the Remote Control BRC program (RCBRC) and operates the drone in accordance with federal laws and regulations.
- Human waste (urination and defecation) on the playa is a violation of federal regulations. You may be issued a ticket that will cost you hundreds of dollars.

DISCLAIMER

THIS SURVIVAL GUIDE PROVIDES INFORMATION ABOUT LAWS AND REGULATIONS APPLICABLE TO ACTIVITIES WITHIN THE BLACK ROCK DESERT IN THE STATE OF NEVADA, AND AT BURNING MAN. BUT LEGAL INFORMATION IS NOT LEGAL ADVICE, AND ALTHOUGH WE STRIVE TO ENSURE THE ACCURACY AND USEFULNESS OF THE INFORMATION HERE, YOU SHOULD CONSULT WITH A LAWYER IF YOU WANT LEGAL ADVICE ABOUT A PARTICULAR SITUATION.

THE FEDERAL GOVERNMENT DOES NOT RECOGNIZE STATE LAWS DECRIMINALIZING MARIJUANA FOR MEDICAL OR RECREATIONAL PURPOSES.

The possession or use of marijuana is a federal infraction in the Black Rock High Rock National Conservation Area where Burning Man takes place, and having a medical marijuana card is NOT a defense.

As of 2017, adults aged 21 and over are permitted **under Nevada law** to possess and transport up to one ounce of marijuana (1/8 ounce of concentrated marijuana) and marijuana paraphernalia within the state. But the use of marijuana in public places is still prohibited, as is possession or transportation of more than an ounce (which could be evidence of trafficking under state law). Other restrictions also apply.

See Nevada Revised Statutes Chapters 453A and 453D for the full text of Nevada's laws regulating medical and recreational marijuana. Remember that **marijuana remains illegal under federal law**, and BLM may cite anyone for possession of any amount.

WHY AM I GETTING PULLED OVER?

- Exceeding posted speed limits on the playa may result in a traffic stop, and could escalate to a vehicle search (depending on the circumstances), and a moving violation of \$250 or more.
- BLM regulations require all motorized vehicles driven at night, except for registered Mutant Vehicles, to have two working headlights, two working tail lights, and two working brake lights. Trailers pulled by motor vehicles must be equipped with two working tail lights and two working brake lights. Motor vehicles must display an unobstructed rear license plate.
- All vehicles must have a current registration sticker and be insured. All drivers must have their driver's license on them when operating any vehicle.
- You may only enter and exit the event site through the Gate. You may not enter or drive around the closed zone surrounding the event site except to approach the main Gate.
- Do not attempt to break through our city boundaries or avoid traffic at the conclusion of the event by driving around looking for an alternative route.
- Hiking in the closure zone is highly discouraged. Those on foot in this area should be prepared to show a ticket stub or risk citation by law enforcement.
- Visiting area hot springs during the event is not allowed.
- A copy of the closure order is available at the BLM Mobile Command station at Esplanade and 5:15.

VISITING ANY AREA HOT SPRINGS DURING THE EVENT IS A VIOLATION OF THE CLOSURE ORDER.

BLACK ROCK RANGERS

The Black Rock Rangers wear khaki attire with the Ranger logo on their chests, backs, and vehicles. Rangers are veteran Burner volunteers who roam Black Rock City and help the community with a variety of issues, including conflict resolution, peer mediation, safety concerns, calling in emergency services and supporting the scene, finding lost kids, helping participants "get" Burning Man culture, and a smorgasbord of other issues the playa presents. The Rangers' ideal outcome is to help people solve their own problems with a gentle nudge in the right direction, and then fade into the dust when they're not needed. Rangers are members of our community, and you should feel free to request their assistance at any time. They are available 24/7 on foot and bike patrol, at Ranger headquarters on the Esplanade near Center Camp, and at the Ranger Outposts in the 3:00 & 9:00 plazas.



EMERGENCY SERVICES DEPARTMENT (ESD)

Black Rock City Emergency Services Department personnel wear yellow uniforms labeled "Emergency Services" and feature the ESD logo on their uniforms and vehicles. They provide BRC with fire fighting, emergency medical, and crisis intervention services. ESD is not part of any law enforcement or other outside agency. Medical Stations are located on the Esplanade at 5:15, behind the 3:00 & 9:00 Plazas on Ceremony, behind the 4:30 and 7:30 Plazas on H, and out on the playa between the Temple and the Man.

LAW ENFORCEMENT

Law enforcement officers have a difficult and important job, on and off the playa. There are multiple law enforcement agencies at Burning Man including BLM and the Pershing County Sheriff's Office. Please respect the valuable work they do—we could not have the event without their services. It is the duty of all law enforcement personnel to enforce the law in a courteous and respectful manner.

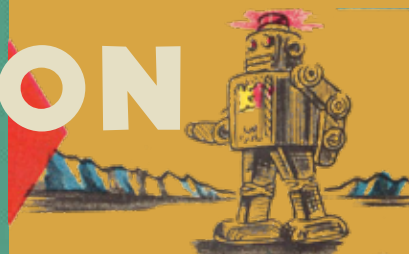
HELP FROM LAW ENFORCEMENT

If you need law enforcement assistance for any reason, please wave down a patrol unit, find a Black Rock Ranger who will help you contact law enforcement, or visit the law enforcement substation located at Esplanade and 5:15. The station is open 24/7 during the event and is staffed by BLM and the Pershing County Sheriff's Office.

LAW ENFORCEMENT FEEDBACK

If you have any feedback (negative or positive) for law enforcement, please fill out a Law Enforcement Feedback Form at Playa Info or Black Rock Ranger HQ on the Esplanade near Center Camp. Your feedback helps improve how we work with the agencies to ensure the safety of our event. It's very important that you fill out the form completely and truthfully. Include the officer's name, agency, vehicle license number, badge number, time of day, details of the event, and the names of any witnesses. Avoid hearsay and accusations that can't be substantiated. Feedback forms turned into Burning Man during the event are discussed with law enforcement agencies the next morning; the timely return of these forms enables us to act on them before the event is over.

TRANSPORTATION & TRAFFIC



THERE ARE LIMITED SERVICES IN THE 76 MILES BETWEEN WADSWORTH AND EMPIRE. THIS MEANS NO RELIABLE ACCESS TO GAS AND NO WATER. YOU'LL NEED TO PLAN ACCORDINGLY. BE WARY OF PICKING UP HITCHHIKERS—THEY MAY NOT HAVE A TICKET! INSIST ON SEEING PROOF OF A TICKET BEFORE GIVING ANYONE A RIDE.

GETTING TO & FROM BLACK ROCK CITY

Traffic is one of the biggest challenges our community faces. In addition to longer wait times to get to and from BRC, traffic places added stress on the surrounding rural area. Here is how we can work together to make a difference:

- Carpool! Fewer vehicles on the road will help reduce wait times.
- Take Burner Express: burnerexpress.burningman.org
- Arrive and depart at non-peak (Midnight – 8 am) times to spread out vehicle traffic. You will also have shorter wait times! Peak arrival and Exodus days are Sunday and Monday.
- There are multiple ways to receive traffic updates during your drive to or departure from BRC. Listen to BMIR 94.5 FM (also streaming on IHeartRadio) for updates at the top of the hour. Also follow @BManTraffic on Twitter. You can also listen to public service announcements during arrival and Exodus on GARS (Gate Advisory Radio Station) at 95.1 FM.
- Inbound traffic on Saturday and Sunday causes major impacts to the surrounding communities. Please do not park on the sides of Highway 447 or CR 34, as this affects the ability for BRC participants, emergency service vehicles, and local communities to travel safely.
- Don't believe GPS! Don't take side roads to Burning Man. Jungo Road is not suitable for passenger vehicles and many cars are damaged and abandoned on it every year.

LOAD YOUR VEHICLE SAFELY!

Loading your vehicle properly, whether it is a car, truck, trailer, motorhome, or anything towed, will make your trip safer and less stressful. Apply some simple precautions to ensure safety.

- Never exceed the load capacity or the towing capacity of a vehicle or trailer.
- Load your vehicle safely. Heavy items should be located low, centered, and over or between the axles. For trailers, load the heaviest items toward the front. Secure your load with straps, rope, net, and or tarps where appropriate so you don't lose anything important and so you don't MOOP on your way to or from BRC.

VEHICLE MAINTENANCE

There are several things to keep in mind when preparing your vehicle. You are traveling to the Nevada desert in August. Temperatures can reach well above 100°F during the day. Your vehicle is going to be loaded with extra weight. Check your vehicle's tire quality and air pressure after loading your vehicle. Before leaving home, follow the tips below to ensure your vehicle is ready for the trip. Have your local mechanic inspect your radiator, tires (including your spare), belts, brakes, hoses, lights and fluids.

TRAVEL TIPS & REMINDERS

Many motorists travel on Interstate 80 until they reach the Wadsworth exit. The roadway from Wadsworth to the playa (Hwy 447) is very different from I-80. I-80 is designed to accommodate several thousand vehicles per hour. Hwy 447 is a two-lane road without wide paved shoulders, signs indicating rest areas, or pull-outs. Hwy 447 has many blind curves, grades, open range areas and soft sand roadway shoulders. Pay attention to the roadway and obey all traffic laws. Buckle up. If you're sleepy, please pull over and rest or trade off driving with someone else.

- Use the Wadsworth or Nixon gas stations' rest areas (and fill up your gas tank) before traveling north to the event. This will help reduce the need to stop alongside the road and the potential of getting stuck in the soft sand shoulder (this happens a lot!).
- There are jackrabbits in the area. It is not worth jeopardizing your safety to swerve to avoid them.
- If you do need to pull over, look for a wide open area that doesn't have steep shoulders bordering the highway. Do not create a traffic hazard.
- Do not get out of your car if traffic stops.
- This is open range area. There are no fences bordering the roadway, so cattle roam the range freely. After dark, cattle are often drawn to the road to soak up warmth radiating from the asphalt. Cows can cost more than \$2,000 and if you hit one in the open range, you or your insurance will be held responsible. Hitting a cow is no fun, as anyone who's done so can tell you. Do not speed. Be prepared to share the road with livestock and wildlife.

- Avoid pulling over near curves and grades. These areas can be extremely dangerous for you and other motorists when attempting to re-enter the roadway. Approaching motorists are often unable to see you.
- Highway 447 leading to Gerlach and all other roads in the area are patrolled by the Nevada Highway Patrol. Observe posted speed limits. Local kids play around the road. Be careful!
- If stopped for speeding on tribal lands (Nixon and Wadsworth), be prepared to post a fine immediately. Most vehicle accidents in which participants are injured occur on Highway 447 & County Road 34 on the final approach to BRC. It is sad that people have often made it across the country only to suffer a serious injury in the last few miles. Please be cautious. Tired? Stop to rest in a safe location!
- Do not throw cigarette butts or—or anything burning—out the window!
- Yield to emergency vehicles—meaning get off the road as quickly and safely as possible to allow them to pass.
- When using safety chains with a trailer, be sure they aren't dragging on the pavement. They can cause sparks, leading to brush fires.
- Law enforcement has been known to search vehicles. Do not park alongside County Road 34. The county Sheriff's Office will ticket any vehicles parked by the roadside.
- Gate Road is your only access to Black Rock City. There are no other routes.
- BLM establishes an off-road closure throughout a two-mile area around our city. It is patrolled by law enforcement agencies. Furthermore, the edges of the lakebed are saturated with water. You will get stuck. Mired vehicles have remained stranded for days or weeks. For more information about travel to and from BRC: burningman.org/event/preparation/getting-there-and-back/

PACK IT OUT

TRASH, RECYCLING AND WASTEWATER

Pack your load securely and separate trash from recycling. (See Travel Tips on page 18.) If you have to carry garbage on top of your vehicle, make sure it is double-bagged and strapped down securely. DO NOT discard refuse along the highway, in neighboring towns or rest areas, or behind private businesses. This reflects very poorly on our community and threatens our future. Dispose **ONLY** at authorized collection areas—several locations are nearby (below)! The Nevada Highway Patrol may issue tickets to anyone leaving trash on the ground. There is a maximum \$2,000 fine for littering. Don't trash Nevada!



LEAVE NEVADA BEAUTIFUL: EXODUS TRASH AND RECYCLING LOCATIONS

Leave No Trace. Pack It In, Pack It Out. Separate landfill trash from recycling. Human/hazardous waste is prohibited. Clean, sort, and unbag recyclables.

(TRASH & RECYCLING ONLY)

SAVE MART SUPERMARKETS

525 Keystone Avenue, Reno, NV, 775-786-2150.

Open 24 hours Sat 9/2 – Tues 9/5.
\$7 per 35-gallon trash bag,

Free Recycling Recycle bicycles, plastics, glass, metals, paper, cardboard, household batteries, and non-perishable food and water.

WHOLE FOODS MARKET

6139 South Virginia Street, Reno, NV, 775-852-8023.

Open 6 am – midnight Sun/9/3 – Wed 9/6.
\$5 per 35-gallon trash bag, Free Recycling

Recycle bicycles, plastics, glass, metals, paper, cardboard, plastic bags, and non-perishable food and water.

RABBIT TRAXX TRUCK STOP - MINI-MART

580 Patterson St., Cedarville, CA, 530-279-2022.

Open 24 hours Sat 9/2 – Wed 9/6
\$5 per 35-gallon trash bag, Free Recycling

Recycle bicycles, plastics, glass, metals, paper, cardboard, and non-perishable food and water.

WASTE MANAGEMENT - FERNLEY/CHURCHILL TRANSFER STATION

1100 US Highway 95A S. Fernley, NV 89408, 775-329-8822.

Open 8am – 5pm Sunday 9/3 and Monday 9/4 Labor Day. Closed from 12pm – 12:30pm.

Open 8am – 4:30pm Tuesday – Saturday. Closed between 12 – 12:30pm.
\$26 minimum for trash, charged by cubic yard. Free recycling, no buybacks.

WASTE MANAGEMENT - STEAD TRANSFER STATION

13890 Mt. Anderson, Reno NV 89506, 775-329-8822

Open 8am – 4pm Tuesday – Saturday. Closed Labor Day

\$25 minimum for trash, charged by cubic yard. Free recycling, no buybacks.

TRASH ONLY LOCATIONS

WASTE MANAGEMENT - LOCKWOOD REGIONAL LANDFILL

2700 East Mustang Road, Sparks NV 89434, 775-329-8822.

Open 8am – 4:30pm, Monday – Friday. Closed Labor Day.

\$35 minimum for trash, charged by cubic yard.

WASTE MANAGEMENT - COMMERCIAL ROW/SAGE STREET TRANSFER STATION

1390 E. Commercial Row, Reno NV 89512, 775-326-2416.

Open 7am - 5pm Monday – Friday, and 8am – 4:30pm Saturday and Sunday. Open Labor Day.

\$35 minimum for trash, charged by cubic yard.

RECYCLING ONLY LOCATIONS

WASTE MANAGEMENT / RECYCLE AMERICA - RENO RECYCLING CENTER

1390 E. Commercial Row, Reno NV 89512, 775-326-2380.

Open 8am – 4:30pm Monday – Friday. Closed from 12pm – 12:30pm. Open Labor Day.

Free recycling, no buybacks.

WHERE TO DUMP RV & GREY WATER

The discharge and dumping of gray water and black water onto the playa/ground surface is prohibited. Gray water is water that has been used for cooking, washing, dish washing, or bathing and/or contains soap, detergent, food scraps/residue, regardless of whether such products are biodegradable or have been filtered or disinfected. Black water is defined as waste water containing feces, urine and/or flush water. Unless noted, portable-toilet waste is not accepted. Contact locations for capacity, cost, and hours.

UNITED SITE SERVICES AT BURNING MAN

Larger camps should consider setting up a contract with United Site Services to collect greywater in BRC. With 30 days notice, they can also provide and pick up a collection tank. 1-800-toilets or email burningmansales@unitedsiteservices.com.

I-80 SMOKESHOP & CAMPGROUND

1000 Smokeshop Circle, Wadsworth NV 89442, 775-575-2181. Open 24 hours. Prices TBD closer to the event.

PYRAMID LAKE MARINA & CAMPGROUND

2500 Lakeview Drive, Sutcliffe NV 89510, 775-476-1155. One 24 hour credit card kiosk dump station. \$10. Have hoses and elbows ready before making payment.

LOVE'S TRAVEL STOP

825 Commerce Center Drive, Fernley NV 89408, 775-575-2200. Open 24 hours. \$10. No hoses available.

GOLDEN GATE PETROLEUM

1055 S. Rock Boulevard, Sparks NV 89431, 775-358-7400. Hours are 5 am – 9 pm. \$8. No potable water, propane is available.

TA TRAVEL CENTER

200 N. McCarran Boulevard, Sparks NV 89431, 775-359-0550. Open 24 hours. RVs and 55-gallon drums acceptable. \$5

RENO BOOMTOWN KOA CAMPGROUND

2100 Garson Rd, Verdi NV 89493, 775-345-2444. Open every day, 8 am – 9 pm. \$10. RV potable water fill up \$4.

MODOC DISTRICT FAIRGROUNDS

1 Center Street, Cedarville CA 96104, 530-279-2315. Open Tuesday 9/22 and Thursday 9/24 10 am – 2 pm and Friday 9/25 12 pm – 10 pm for potable water fill up \$.50 per gallon. 24 hours starting 10 am Saturday 9/2 – 8 pm Monday 9/4 for showers \$10, RV dump \$10, trash \$5 per 13 gallon or \$10 up to 55 gallon. Recycle bikes \$5.

ALTURAS CHEVRON

1080 North Main Street, Alturas CA 96101, 530-233-5114. Open every day, 5:30 am – 10 pm. \$5.

MAP & DIRECTIONS TO BURNING MAN

FROM THE SOUTHEAST

From Fallon, take Hwy 50 west 31 miles to Fernley. Drive through Fernley to Hwy 427. Stay on 427 for 5 miles to Wadsworth. Turn right onto Hwy 447. It's 75 miles to Gerlach.

FROM THE WEST AND SOUTHWEST

Route 1: From Reno take I-80 east 28 miles. Take the Wadsworth/Pyramid Lake Exit #43 to Hwy 447. Turn left—you can get gas here. Go north 1 mile to Wadsworth and turn left on Hwy 447. It's 75 miles to Gerlach.

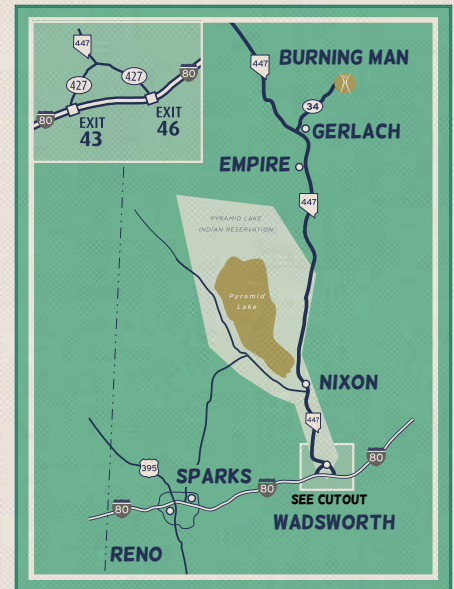
Route 2: From Reno take I-80 east 4 miles. Take Exit #18 to Pyramid Way/Hwy 445. Turn left and travel north 31 miles. At Pyramid Lake, turn right on Hwy 446, and go east 12 miles to Nixon - you can get gas here. Turn left on Hwy 447, traveling north. It's 59 miles to Gerlach.

FROM THE EAST

From Winnemucca, take I-80 for 130 miles to Fernley. Take Exit #46. You can get gas and supplies here. Turn right onto Hwy 427. Travel 5 miles to Wadsworth. Turn right onto Hwy 447. It's 75 miles to Gerlach. The other route from Winnemucca—Jungo Road—is a very treacherous dirt road, with easy-to-miss turns, and it is likely to cause a flat tire or worse. Please don't try this route.

FROM THE NORTH

From US 395, go 25 miles east on Hwy 299 to downtown Cedarville. This is the last opportunity to fill up on gas, supplies, and services until Gerlach. From downtown, go south onto County Rd 1/Hwy 447 for 84 miles to Gerlach. Before entering Gerlach, turn left on County Road 34 and it's 8 miles to the Burning Man entrance.



GERLACH TO BLACK ROCK CITY

From Gerlach, go west on Hwy 447 for one mile to the fork. Take the right-hand fork, CR 34, and continue 8 miles to the Burning Man entrance. Note the 3-mile playa entrance (first turn-off) used in previous years is NOT an entrance to Burning Man. The 12-mile playa entrance, just beyond ours, will also not take you to Burning Man. Both will be patrolled by BLM Rangers.

EXODUS

During peak departure times on Sunday and Monday, it can take six to eight hours to get out of BRC and another three hours to get to Reno, or longer if there are accidents on Hwy 447. The event officially ends at 6 pm on Monday, September 4 (Labor Day). We have authorization from BLM to allow Exodus to extend through Tuesday, September 5, at noon. This is to allow a safe and smooth egress period. If the line of cars is long, and your schedule allows, you may wait in your camp. Use the extra time to rest for the drive, secure and tie down your vehicle loads, and MOOP. This is a time for winding down, not continuing the event. You must leave BRC by Tuesday at noon.

EXODUS QUESTIONS

For a full list of frequently asked questions about Exodus, go here: burningman.org/event/preparation/getting-there-and-back/exodus/

PULSING: EXODUS PEAK TIMES

We may implement Pulsing at any time from 12:01 am Sunday morning until 11:59 pm Monday, or until there is not a need. Pulsing is a system of moving vehicles at regular intervals toward the highway on Gate Road to avoid the long slow creep that challenges the sanity of even the most patient among us. With Pulsing, vehicles stop and turn off their engines. Then, every hour, vehicles are pulsed a mile forward all at once. Pulsing does NOT get you out of the city more quickly, but it gives you a break from driving and is more environmentally friendly. Use this time to meet your neighbors! During Pulsing operations, expect to be stopped along Gate Road for long periods of time. Potties will be available. Listen to BMIR 94.5 FM and GARS 95.1 FM for Exodus and Pulsing info.

**2018
SURVIVAL
GUIDE**

* DESIGN ARIN FISHKIN * PROJECT & PRODUCTION MANAGER REBECCA THRONE

* SURVIVAL GUIDE TEAM MARIAN GOODELL, MEGAN MILLER, JIM GRAHAM,
DOMINIQUE DEBUCQUOY-DODLEY, JON MITCHELL, SILVIA STEPHENSON, & MOLLY VIKART

WITH GRATITUDE TO THE ORIGINAL BURNER, LARRY HARVEY (1948-2018).